



Wool Mini Skirt

PROJECT DESIGN © LOVE PRODUCTIONS 2022
THIS DESIGN IS PROTECTED BY COPYRIGHT
AND MUST NOT BE MADE FOR RESALE.

1.5-CM (5/8-IN.) SEAM ALLOWANCE INCLUDED (UNLESS OTHERWISE STATED)

TEST SQUARE: 10CM x 10CM / 4 INCHES x 4 INCHES

SIZING KEY

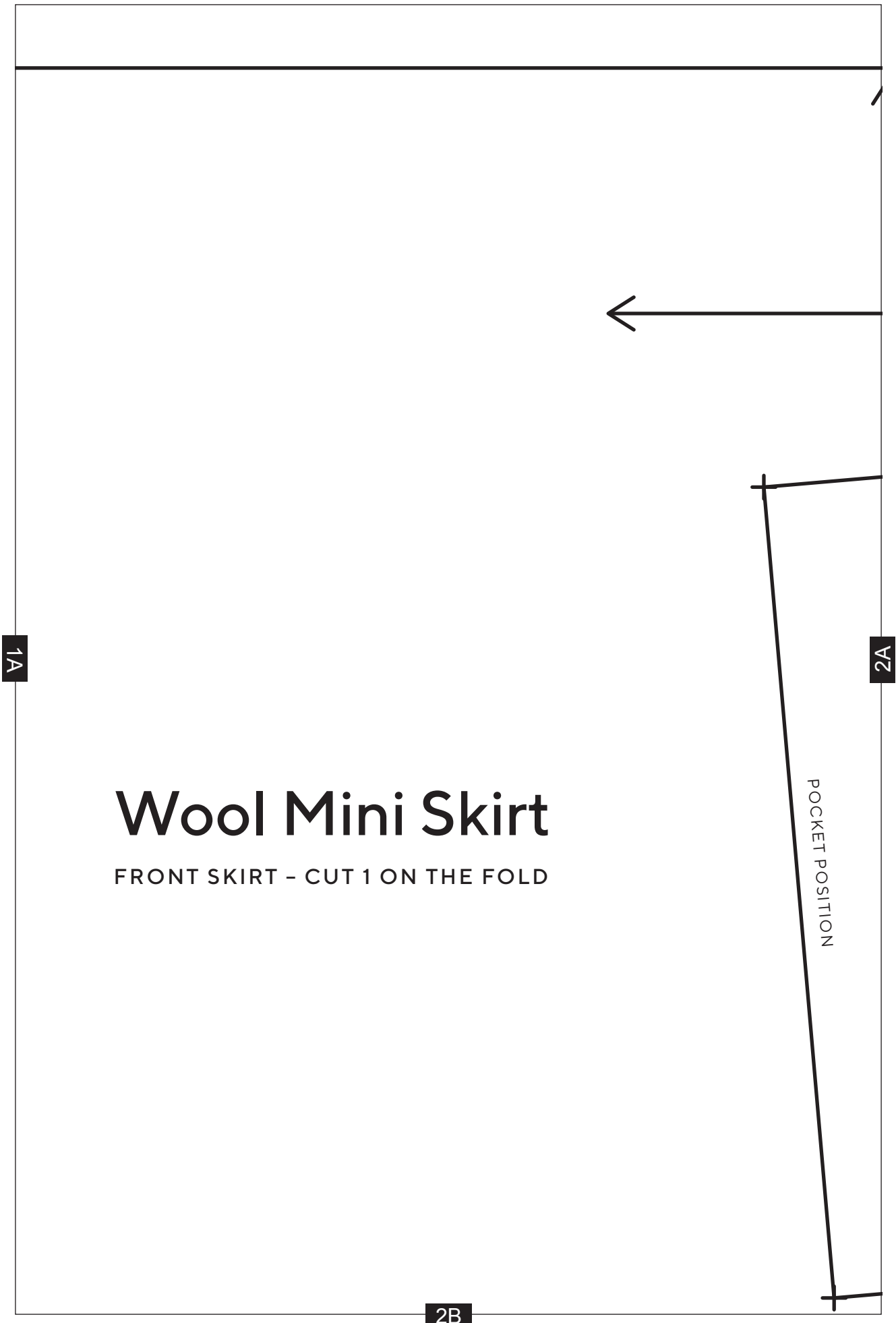
—————	8
.....	10
- - - - -	12
- . - . - .	14
- - - - -	16
- . - . - .	18
— — — — —	20
—————	22

CENTRE BACK

Wool
BACK WAIST
+ 1 PAIR IN IN

1A

1B



Wool Mini Skirt

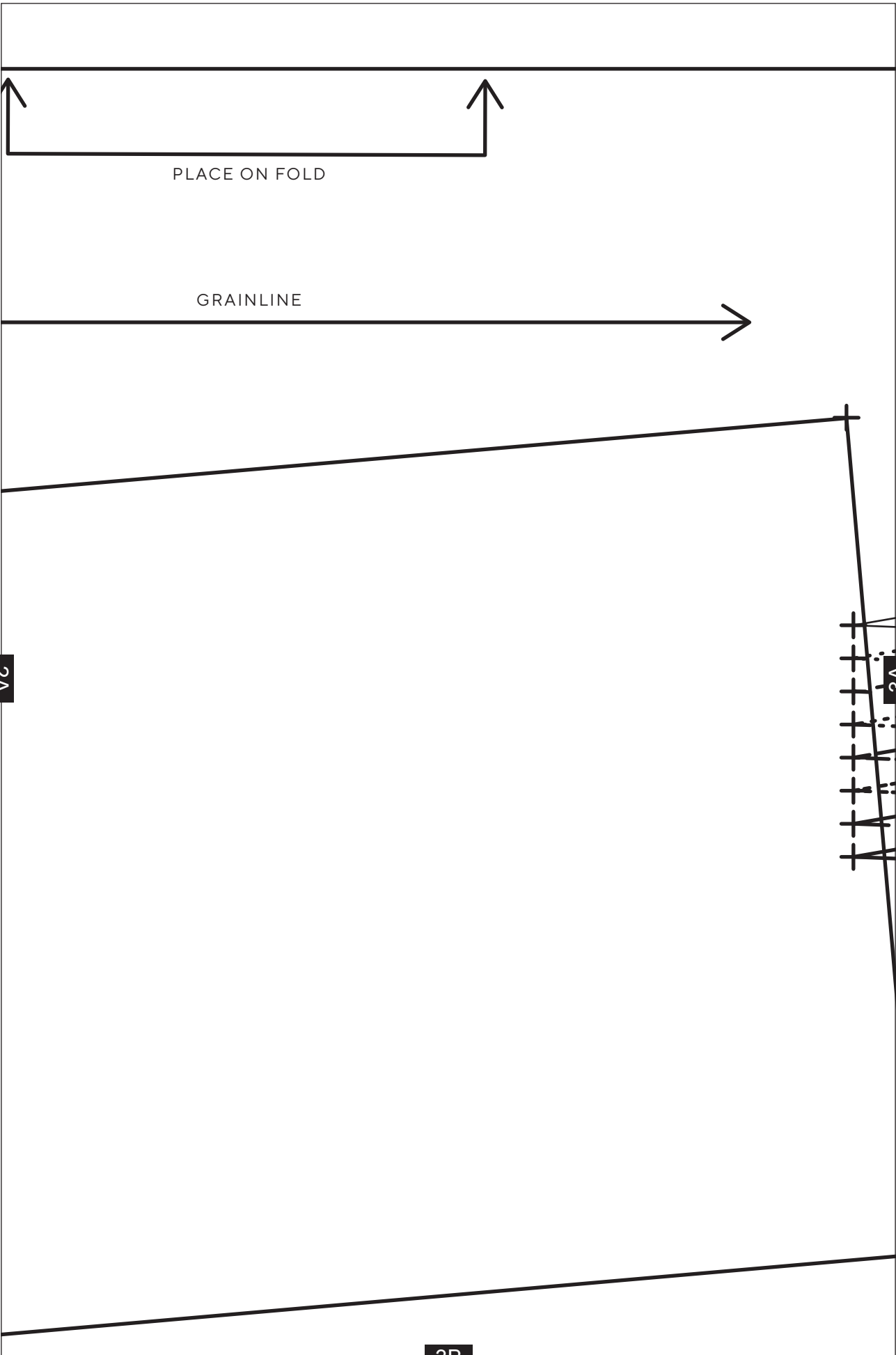
FRONT SKIRT - CUT 1 ON THE FOLD

1A

2A

2B

POCKET POSITION

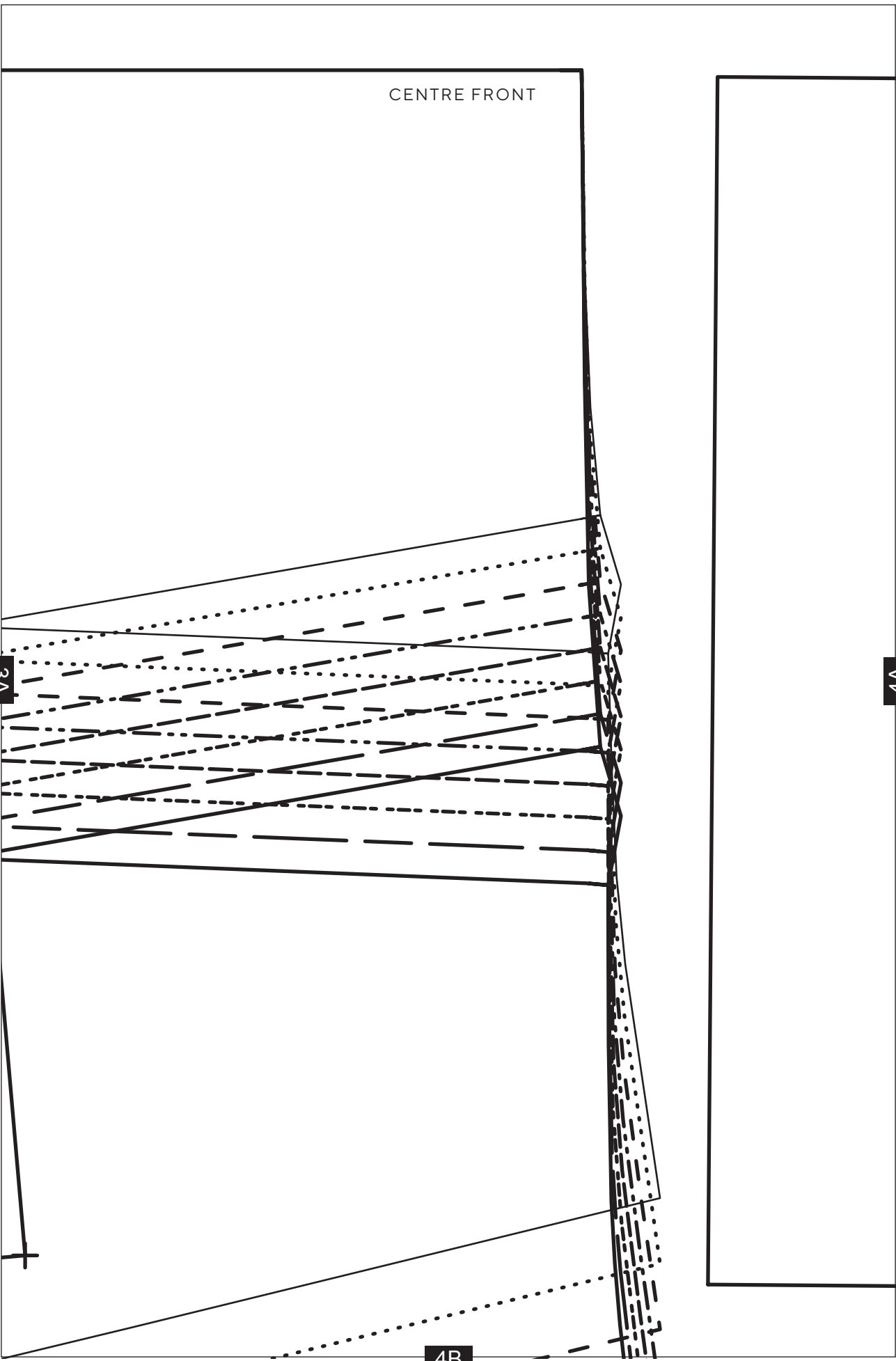


CENTRE FRONT

3A

4A

4B



PIPING AROUND POCKET EDGE

Wool Mini Skirt

POCKET - CUT 1 PAIR



GRAINLINE

4A

5B

1B

Mini Skirt

FACING - CUT 1 PAIR IN FABRIC
INTERFACING

GRAINLINE



8

10

12

14

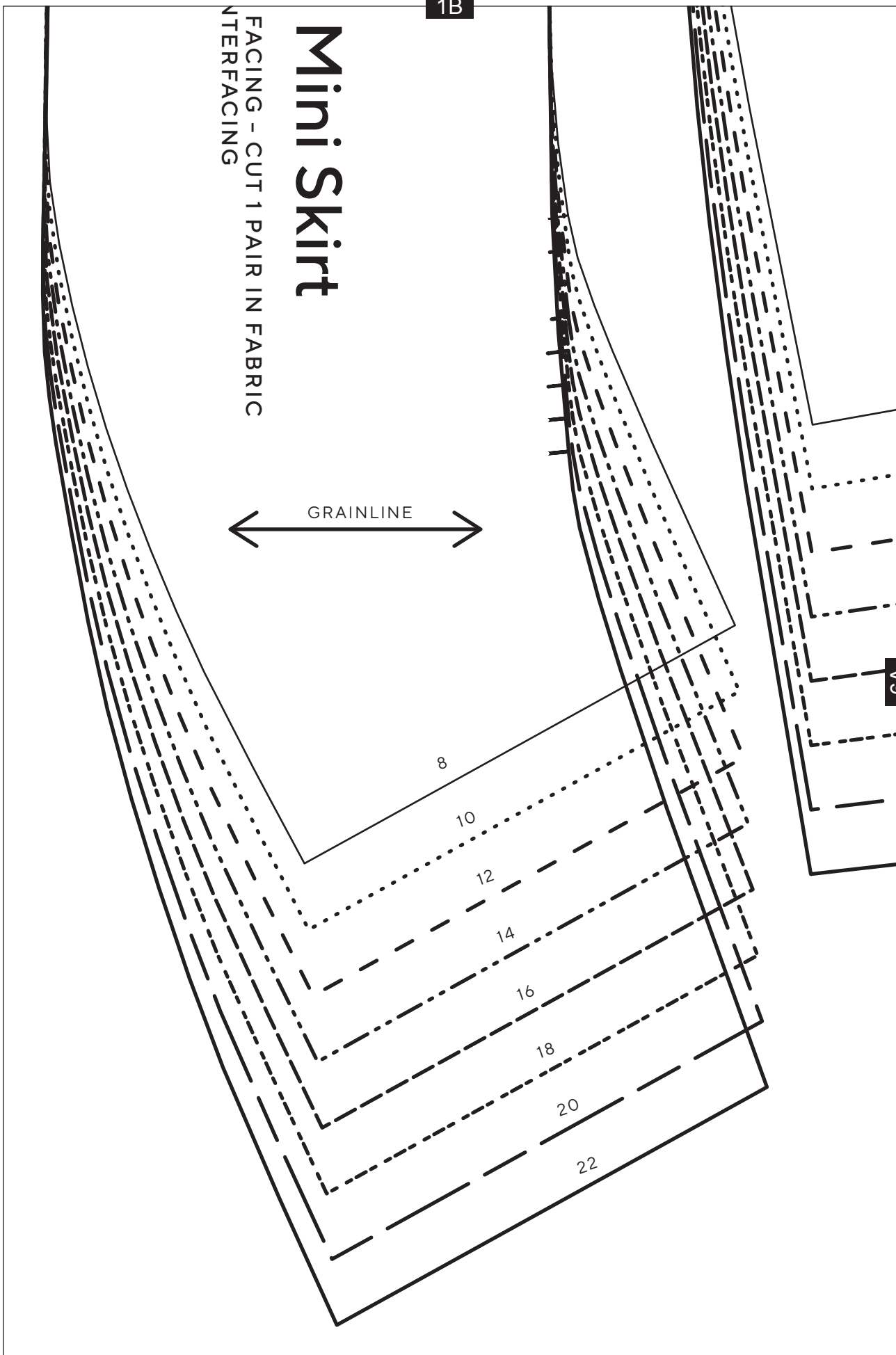
16

18

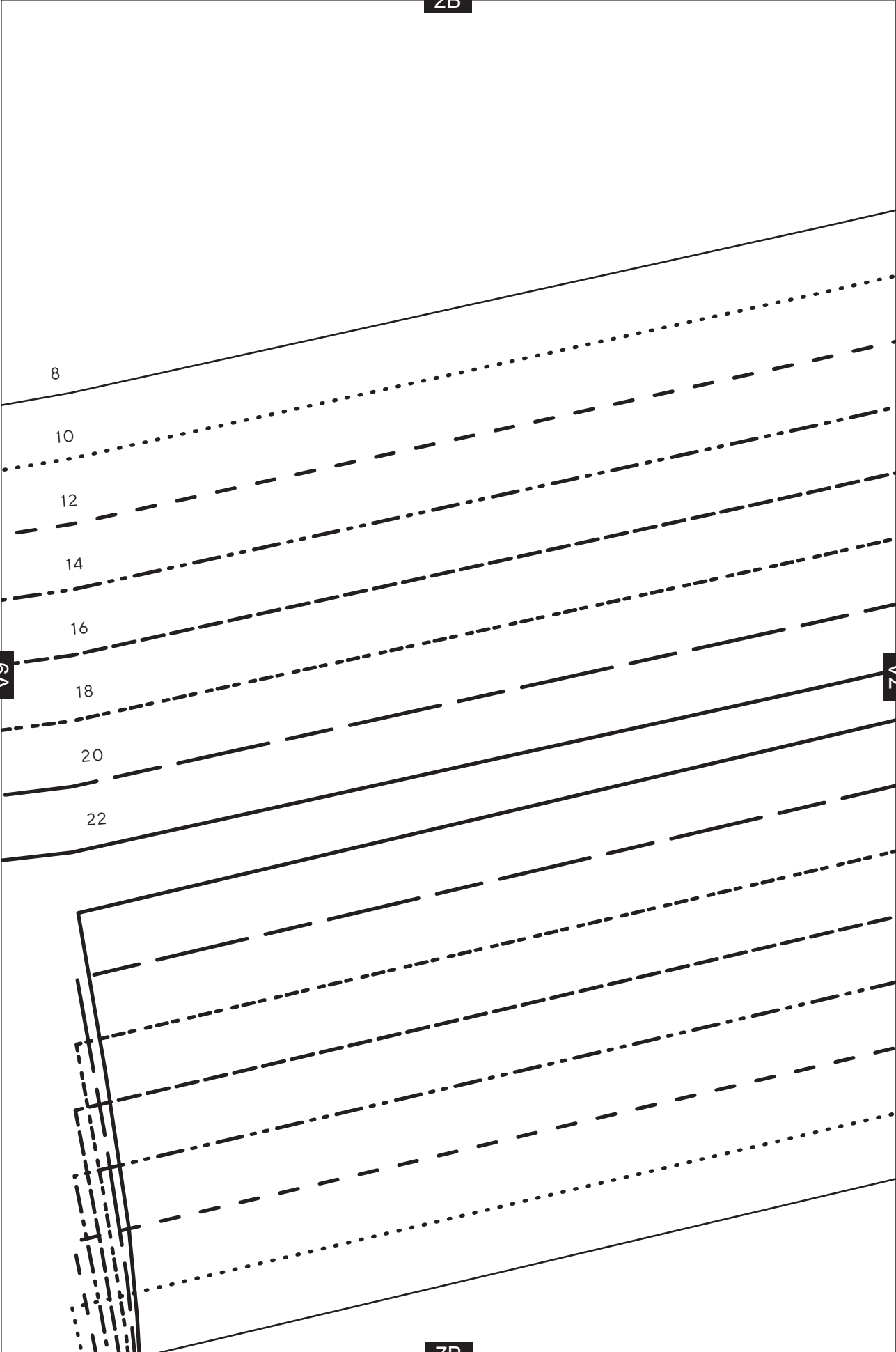
20

22

6A



2B

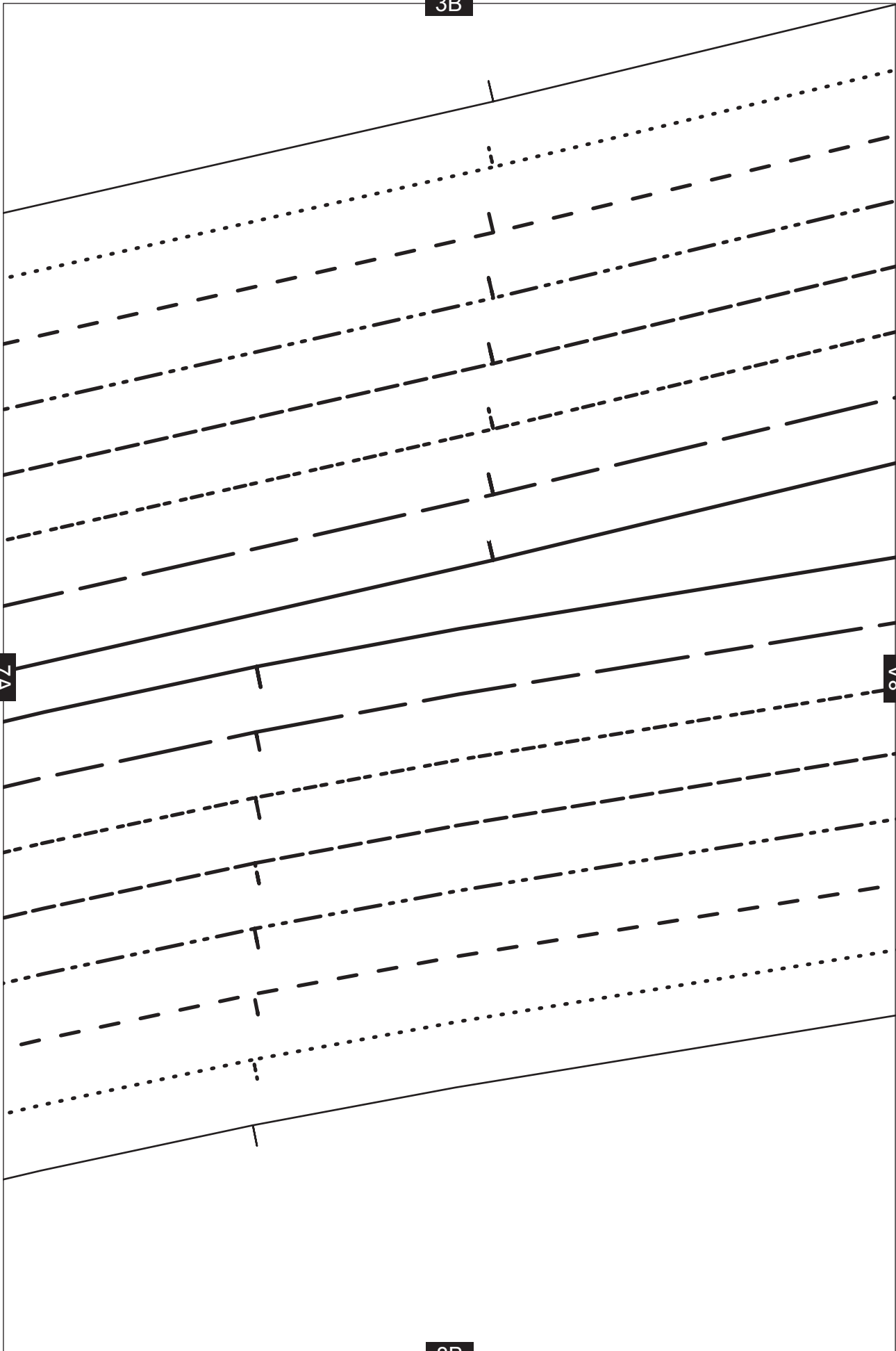


6A

7A

7B

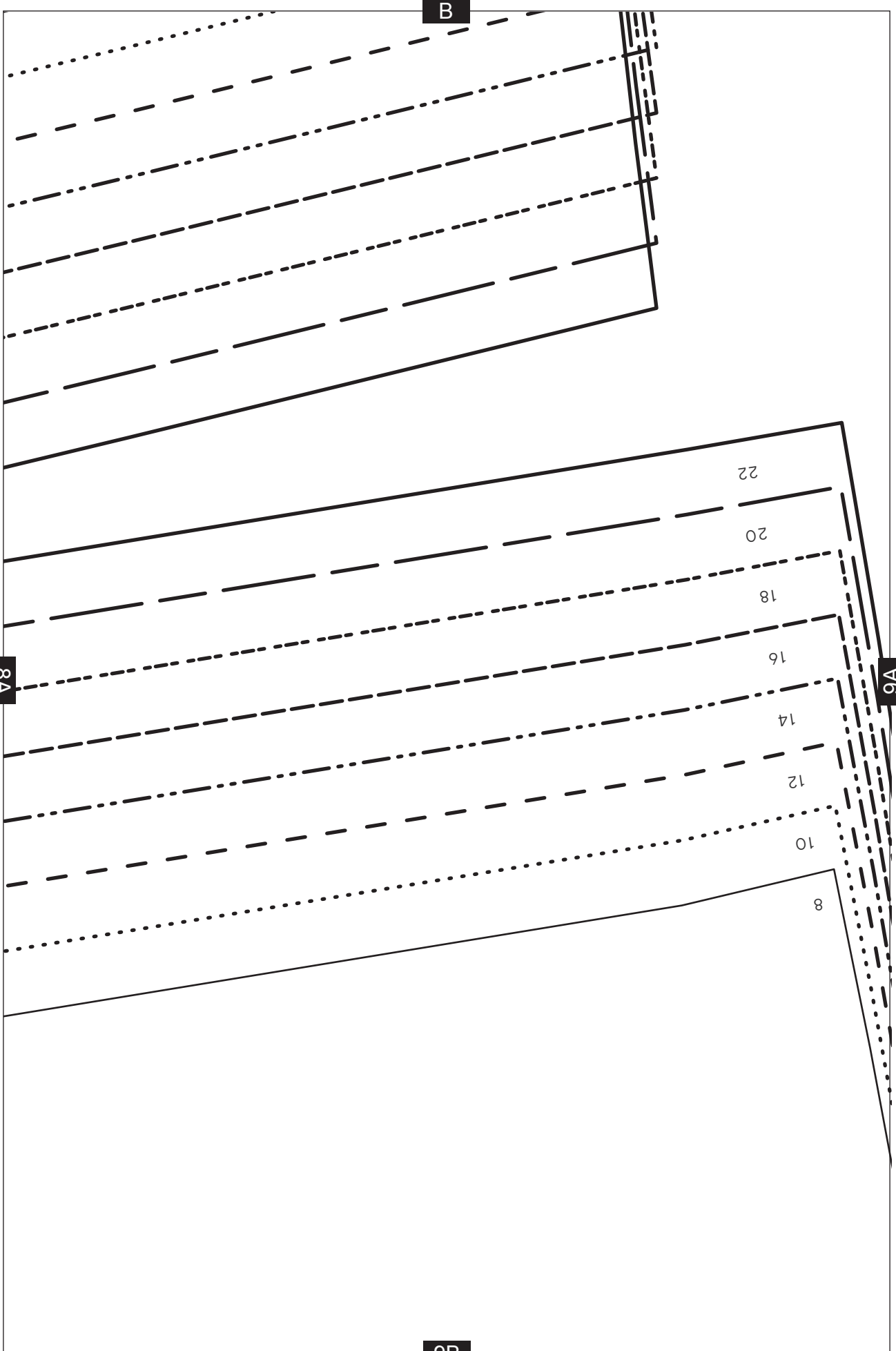
3B



7A

8A

8B



B

8A

9A

9B

22

20

18

16

14

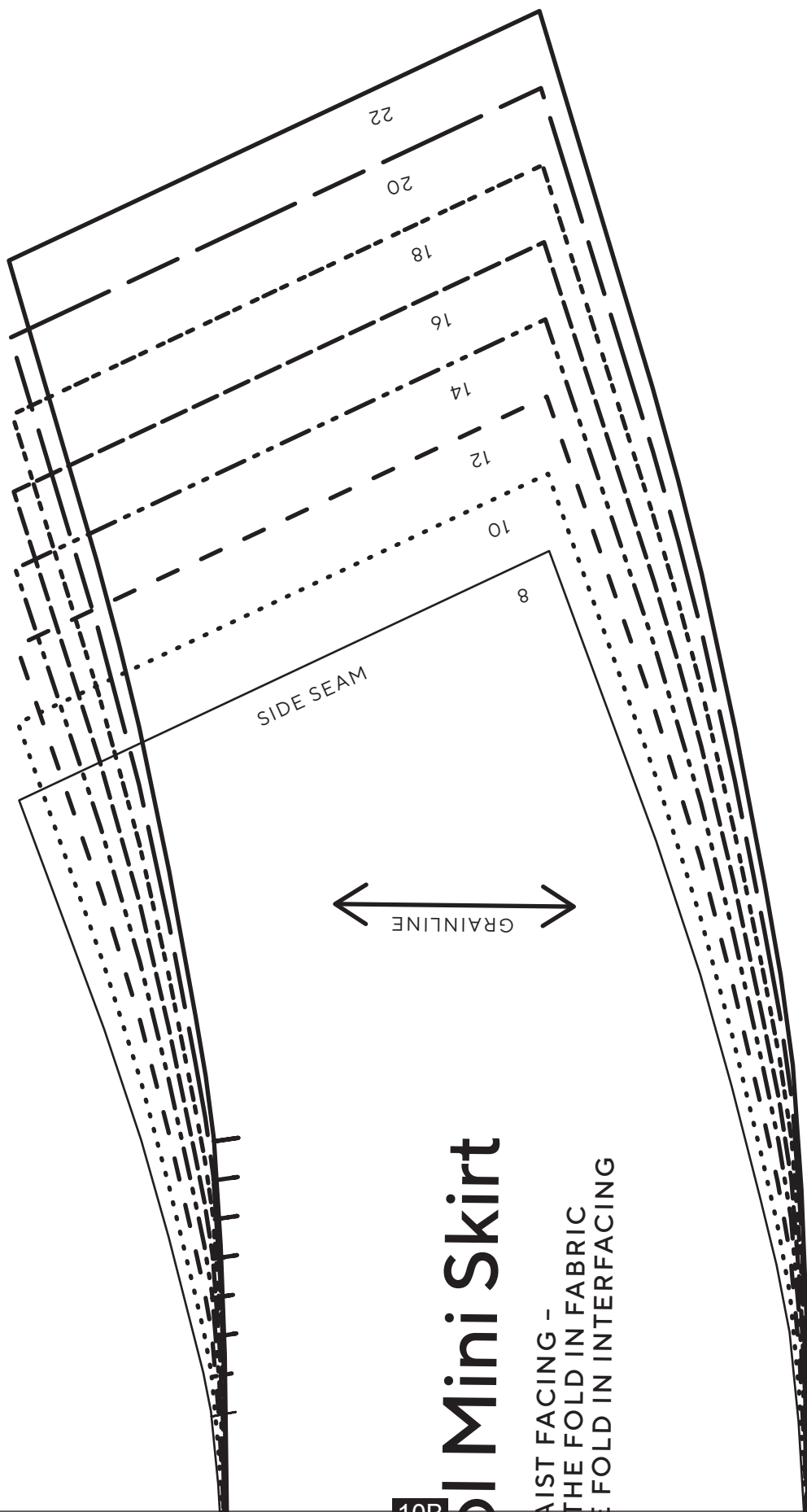
12

10

8

5B

9A

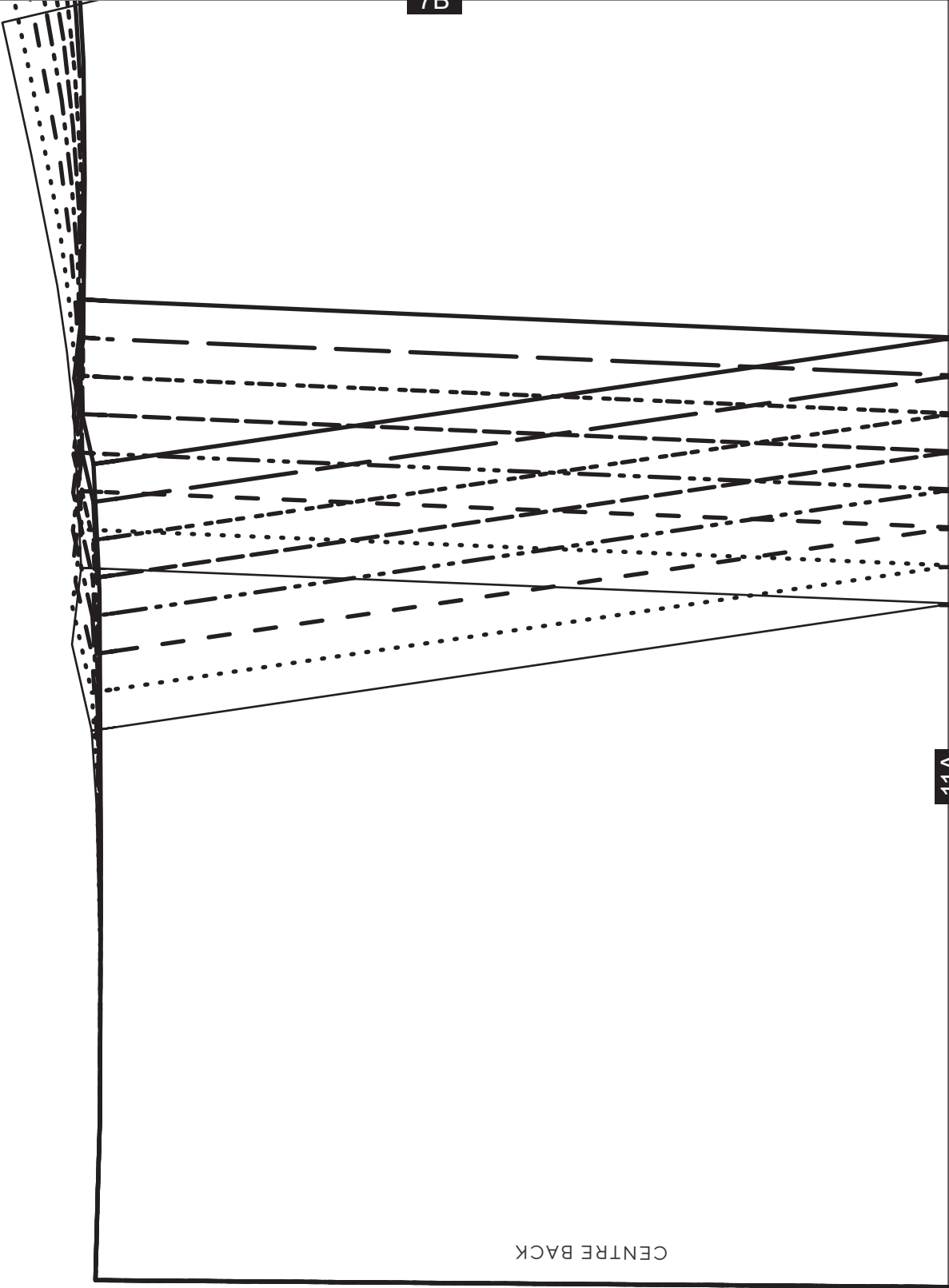


10B

Mini Skirt

WAIST FACING -
 THE FOLD IN FABRIC
 FOLD IN INTERFACING

7B



11A

CENTRE BACK

8B

12A

11A



EXPOSED ZIP 21.5CM (8 1/2 IN)

ZIP
END

Wool Mini Skirt

BACK SKIRT - CUT 1 PAIR

12A

9B

13A

GRAINLINE



10B

Wood

FRONT WALL
CUT 1 ON
+ 1 ON THE

PLACE ON FOLD



CENTRE
FRONT

13A